

The Builder



The Newsletter of the National Model Car Builders' Museum

The New Museum

MARK S. GUSTAVSON

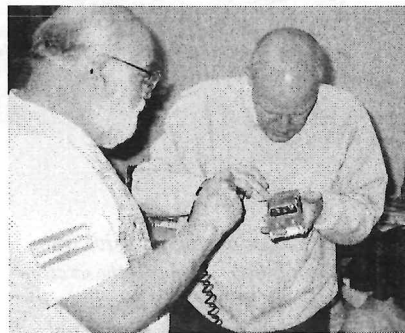
The new Museum facility is just terrific. It is also required more hard work than anyone around here could have imagined when we decided to make the move.

The effort to get the Museum ready for public tour proceeds well, if a bit slower than we would like. Once the painting was finished, the carpet laid in late July, and everything delivered, it became apparent that the presentation of the items in the facility was a key matter so that the Museum doesn't appear to be simply a warehouse. Thus, we had to plan how to space the wall-mounted display cabinets, where to place the Oakland Roadster Show Diorama, how to arrange the library room (where thousands of magazines and two full file cabinets are presented), and how to display the thousands of parts and "modelabilia" that will educate visitors.

On top of those concerns, we discovered that some of the models were slightly damaged in transit—mostly, parts just came loose. So we decided to clean each model and repair any damage that had occurred in the nerve-racking moving process. When finished, each model will be grouped in the wall-mounted display cases by building style (replica stock, customs, street rods, competition, etc.) and then

chronologically so that visitors can better appreciate the collected work of so many builders.

Though we've had three early visitors to date, the Museum will not be fully ready for the public until its debut during the eighteenth GSL International Model Car Championship, April 26–29. To meet this goal, local Museum Trustees and members of the Utah Miniature Automotive Guild and Utah Model Car Association donate 8–12 hours per week. On December 16, for instance, we had a marathon work session to unpack and place dozens of boxes of vintage paint, aftermarket kits, repair parts and supplies, art work, and other items



Dennis Barker (left) and Mike Swan work hard to clean light dust and other contamination from a model that will soon be on display. Both of these fellows are fussy, detail-oriented guys who have really worked miracles!

The Museum Trustees and others express their collective appreciation to all of you who have gener-

ously donated funds to help us do our job. Without your help, literally none of this would be possible.

Pictures of the Museum are presented throughout this newsletter.

Tom Daniel a Museum Member!

MUSEUM STAFF

Richard Jarmusik has introduced the Museum to famous model car illustrator, kit designer, and consultant Tom Daniel. Richard purchased a special Daniel video for the Museum and Tom also sent along some

In this Issue

The New Museum	1
Tom Daniel a Museum Member!	1
Darrell Zipp Gets on Board and Lends Two Historic Models	2
Goodguys Update	3
Donation Corner	3
Barnett Project Update	4
Letter to the Museum	5
Club Newsletter Project	5
New Modeling Booklet	5
GSL-XVIII	5
Special Projects Division	5
Museum Store	6
Ed Roth Paints Needed	7
Publications Needed	8
In Memoriam	8
Adopt the Museum for a Month!	9

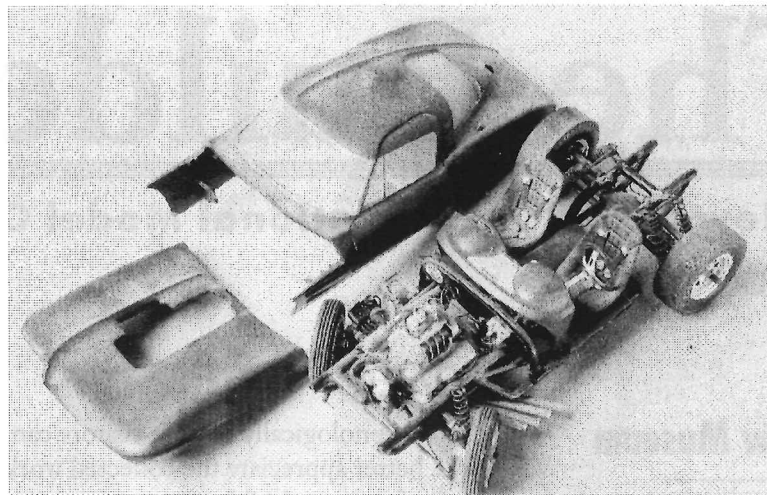
cards illustrating his designs. In a wonderful accompanying note, now archived, Tom indicated that he would probably attend GSL-XVIII, April 26–29, 2001. Terry Jessee also has told Tom (see Terry's article on Tom in the February 2000 issue of *Scale Auto Enthusiast*) that the Museum is a great place. The Museum made Tom an honorary member. The Museum extends its thanks to Tom, Richard, and Terry for their help. Welcome aboard, Tom!

Darrell Zipp Gets on Board and Lends Two Historic Models

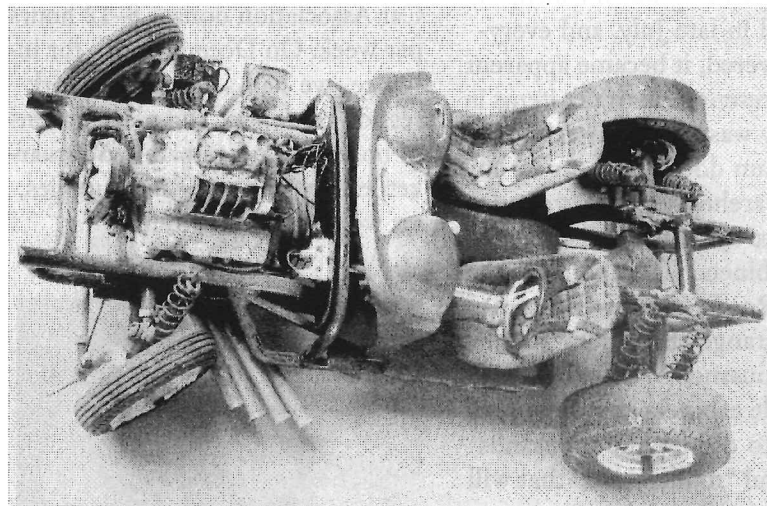
MUSEUM STAFF

After a year of correspondence between Darrell Zipp (proprietor of Zipper Motors in Colorado) and Mark S. Gustavson, Darrell and Rosalee Zipp recently visited the still-unfinished Museum and loaned the Museum two of his famous models. The first is one from the Revell-Pactra II contest and the second is his winning entry in the "Dream Dragster" contest that *Model Car Science* and Monogram Models jointly sponsored in 1970. The prize for that contest was Darryl Starbird's *Predicta* show car! Yeah, really!

Both models need a lot of work to return them to show condition. This issue, we'll feature the Corvette that earned Darrell Senior Winner status in Region 9 (Wisconsin, Minnesota, Iowa, Missouri) of the Revell-Pactra II contest. This rare look into the past of our hobby will be featured prominently in the upcoming Museum publication on the history of the Revell-Pactra and both Revell-Testor contests (funded through a generous endowment by C. E. Anagnostopoulos). If all goes



The model is dirty, needs considerable work, but is still in remarkable condition. Note the offset styling on the Corvette body and the extraordinary attention to detail on the chassis of a model built in 1965. The paint is shot and will need to be removed before repainting. Fortunately, a good sample of the paint color can be found on a panel under the B pillar. Darrell agreed to let Mark S. Gustavson repaint the body.



Take a close look at the chassis, drive train, and other details here. Of note is the scratch-built brass frame, operational steering with adjustable tie rod ends, functioning coil springs, and tons of mechanical detailing. These parts will be thoroughly cleaned, but it might not be necessary to do any restoration as such. We'll contact Bill Taylor (whose extraordinary work has been seen in these pages before) to see if he's interested in this work.

well, the tome should be published at the end of 2001. If you know of any participants, models, or other

artifacts from any of those contestants, please contact the Museum.

Kirk Bell of *Scale Auto Enthusiast* has indicated that he is interested in a full feature.

Next issue, we'll take a look at Darrell's *Dream Dragster*. Welcome aboard as Museum members, Darrell and Rosalee!

Goodguys Update

MUSEUM STAFF

As we've mentioned previously, the Museum has formed a great relationship with the Goodguys Association. Last issue, we reported on winners who had achieved Best of Show in Goodguys events through the date of publication. Since that issue, more skilled modelers have achieved Best of Show status at Goodguys shows

Aaron Thomas won Best of Show at the Goodguys Colorado Classic model car contest held in Colorado Springs on September 8-10, 2000. Jack Ham won at the West Coast Street Rod Nationals, Pleasanton, California, August 25-27. Steve Sellers won at the East Coast Nationals, September 15-17. Floyd Bryant won at the Lone Star Nationals, September 30-October 1. Ricky Couch won at the Southwest Nationals, October 20-22.

Congratulations to Aaron, Jack, Steve, Floyd, and Ricky! Hey you guys: send the Museum some high quality photos of your models for our archives and we'll try to run them in a future issue of *The Builder*.



Aaron Thomas's Best of Show winner at the Goodguys Colorado Classic.

Donation Corner

PAUL ANAGNOSTOPOULOS

The Museum continues to be blessed with generous donors who have helped out with monetary donations so that we can pay our bills. Here is a recent list.

Mark L. Brown

Recently, Mark L. Brown, from California, donated \$600 to be put to any use we determined. It was used to purchase shelf brackets, stanchions, and shelves for the Museum as well as some additional paint. The balance of this donation was used to pay our postage bill. Thanks, Mark, for your abundant donation!

Scale Modelers Alliance

About the same time, the Museum received another major donation from a disbanded model car club. The letter from club member Bruce Kimball tells the tale:

Around 4 years ago, a group of local modelers had started a club [*Editor's Note: The club was called the Scale Modelers Alliance*]. Over time, we have gone our separate ways, and although we no longer meet together on a regular basis, we still stay in contact and visit each other when we can. Anyway, when we drew up some guidelines in the beginning, one of them was that if we did "disband," so to speak, and there were any funds left, these funds would be donated to the National Model Car Builders' Museum. After several years of holding onto this money, it has come time to where we believe we should now send you these funds, in the amount of \$505. Here is a list of the people involved in this group:

- Adam Weinstein
- Don Landle
- Mario Vitare (the designated Lifetime Member by the group)
- Scott Friedman
- Bruce Kimball
- Frank Bennett
- Gary Mitchell

Many thanks to this great bunch of guys. You know, they could have easily divided up the money or had a party. But their understanding of, and commitment to, the Museum and its purposes resulted in this

great donation. Thanks, gentlemen! (Each of you has been made a Museum member for 2001.)

eScaleCars Auction

Thanks are again extended to Roy Sorensen and Rick Hanson for continuing to promote the Museum through the sale of items on eBay, with all of the proceeds going to the Museum. Most recently a Franklin Mint Lowrider '63 Chevy was donated by George Bojaciuk and auctioned. If you want to participate, check back every couple of weeks by entering these words on the eBay search function: "Fund Raiser" and "NMCBM". If you want to contribute a model for this auction, contact Roy at motoreplica@worldnet.att.net. Remember, 100% of all auction bids will be donated to the Museum, and all buyers who bid over \$50 will also receive a one-year Museum membership. The lucky bidder for the second auction was Doug Wiseman. The next car going up for bid will be a Testor '69 GTO Judge built by Dennis Doty. The car will go on the auction block Jan. 1, 2001.

Go to www.escalecars.com for more information and a visit to an excellent site. Thanks to Roy and Rick for their great support!



In the main display room, Dennis Barker (L) and Mike Barlow discuss where models should be placed (after cleaning) in the four wall-mounted display cases.

Scale Motorsport's "One Percent for the Museum"

The Museum is delighted to report that Matthew Wells, proprietor of Scale Motorsport, has created a "One Percent for the Museum" drive. Matt will donate 1% of his gross (not net) Web sales from January 1 until April 1 to the Museum. Matt will present the check to Mark S. Gustavson, on behalf of the Museum, during the awards banquet at GSL-XVIII, which will be held in Salt Lake City on April 26-29, 2001. This program is mentioned in current Scale Motorsport advertisements. The Museum wishes to express its profound appreciation to Matt for his forward-thinking generosity on behalf of the Museum. Hopefully, other aftermarket companies will join Scale Motorsport in this great program!



Visit www.scalemotorsport.com or email scalemotor@aol.com

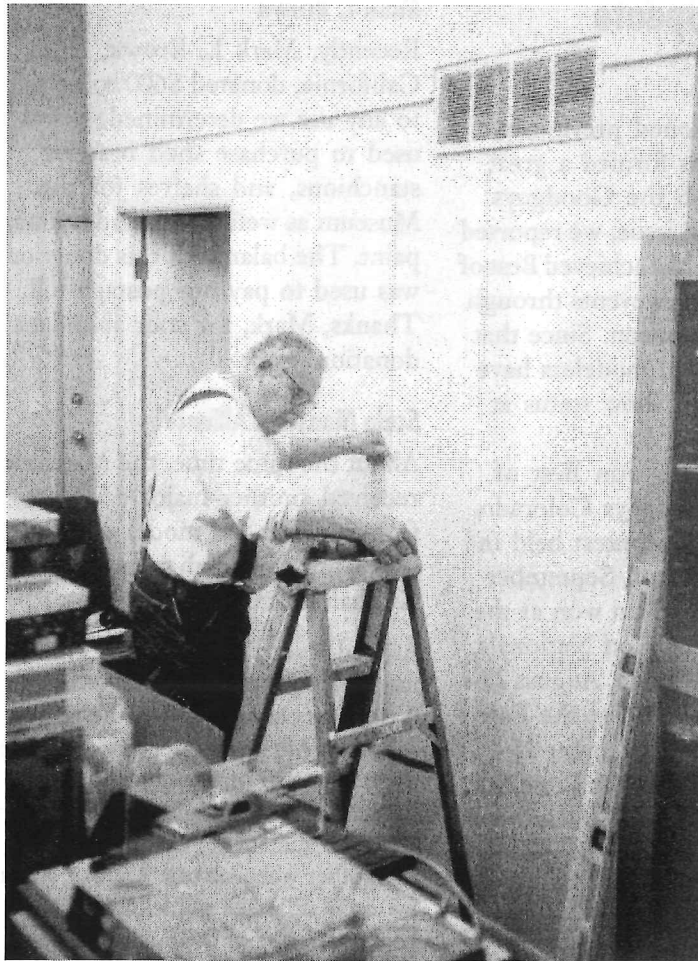
Other Donations

These items have been donated since our last newsletter:

JOHN SHARISKY. October 2000: three issues of Miniature Car Quarterly

WILLIAM WOOD. October 2000: March-April issue of IAAM The Bulletin

JAMES OWENS. November 2000: MPC "Californian" (Harry Bradley designed Toronado)



Bill Dargavel is installing standards for shelves that will display paints, vintage glues, aftermarket parts paks, and other artifacts from the history of our hobby. This is the third room in the Museum: a converted warehouse that we have insulated, painted, and carpeted. A restoration workbench has been constructed here.

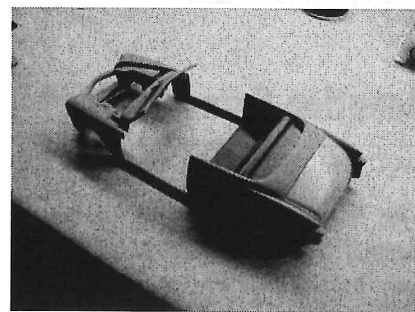
Barnett Project Update

MUSEUM STAFF

The Museum is pleased to announce that Joe Prestia has volunteered to complete Bob Barnett's '49 Mercury convertible that was described in the last issue of *The Builder*. Joe is a builder of no small note in New Jersey and his enthusiasm for Bob's unfinished vintage custom is greatly appreciated. Joe advises us that the Barnett model should be ready in about a year. Thanks, Joe!



Joe Prestia repairs a low spot in the upper left quarter panel of the Barnett '49 Mercury.



Here is the Mercury body after repairs and a coat of primer.

Letter to the Museum

PAUL ANAGNOSTOPOULOS

This note was received from Russ Harding following his receipt of a certificate of appreciation for his hard work in trying to locate modelers who were involved in the Revell-Pactra and Revell-Testor Championships in the early '60s. Russ has been working diligently to locate participants in those two contests, bearing the expense of dozens of phone calls.

Mark,

The Certificate of Appreciation from the museum came in the mail yesterday, and I can't begin to tell you how touched I was by this unexpected gift! It literally brought tears to my eyes. When I resumed building models again, ten years ago, I never thought that it would lead to all the new and wonderful experiences that it has given me. I have met the nicest people I could ever have hoped to meet; seen the unbelievable in modeling from the most talented modelers in the world; and now, this! I can tell you that I will cherish this for as long as I live. I'm going out right now to get a frame for it. Thanks to all of you.

Russ
The Dedicated Modeler

Club Newsletter Project

MUSEUM STAFF

We express our thanks to Sandy and Bob Johnson for their help in cataloging, indexing, and sleeving thousands of club newsletters from across the United States (and a few foreign countries as well). This is a great example of Museum enthusiasts who have taken on a project that is crucial to the Museum's goal of preserving the history of our hobby, including contemporary history. Thanks, Sandy and Bob!

New Modeling Booklet

MARK S. GUSTAVSON

The GSL International Model Car Championship, through Championship Publishing, LLC, is pleased to announce the availability of a new modeling booklet, "How to Build Better Scale Model Vehicles," written by Mark S. Gustavson and Robert A. Wick. This booklet will be useful to all scale vehicle miniaturists who wish to think about and think through the many conceptual and practical details necessary to construct accurate and intelligently-built scale automotive miniatures that create the illusion of reality.

With an informative text and illustrations, this booklet is available, *free of charge*, to anyone who sends an 9" x 12" envelope, with three first class stamps, to:

National Model Car Builders' Museum
10271 South 1300 East
PMB #131
Sandy, Utah 84094

Please include a note requesting the booklet by name. If you live outside the United States, send your large envelope with \$1.50 US postage affixed. The booklet will be available for shipping around January 15, 2001.

GSL-XVIII

MUSEUM STAFF

GSL-XVIII, the eighteenth GSL International Model Car Championship, is set for April 26-29, 2001 at the Holiday Inn, 999 South Main Street, Salt Lake City. A full range of competitive classes will be presented to interested competitors, including the Same Kit Class that will focus on the AMT 1960 Ford Starliner, and the popular-vote Group '01,

which will focus on the venerable Monogram 1936 Ford.

Interested builders can get on the GSL-XVIII mailing list by sending a note to our new address:
GSL-XVIII
c/o National Model Car Builders' Museum
10271 South 1300 East
PMB #131
Sandy, UT 84094

You can also register at the GSL web site. Visit www.gslchampionship.org, click on "Contact Us," then on "pre-registration form." Finally, you can send email to Paul Anagnostopoulos at paul@windfall.com and he will add you directly to the GSL mailing list. Please supply your name, postal address, and email address.

Museum activities will be manifold: The Museum will host a reception on Thursday evening of the Championship; there will be a special Museum seminar to present the restored Jim Keeler *Model Car Science* bubble top Corvette; Pryor Passarino will present his clone of Tony Broer's 1/32 '32 Ford found in the August 1959 issue of *Rod & Custom*; and Chris Stames will present the restored and super rare 1/4 scale Revell 283 Chevy engine. Of course, there will be a tour of the Museum. A full size bus will ferry GSL attendees every hour on Saturday night.

Already, we have commitments from competitors in Scandinavia, Brasil, Canada, the Netherlands, Great Britain, and six States and it's only December! So see you here in April!

Special Projects Division

MARK S. GUSTAVSON

As you know, the Special Projects Division has been organized to pursue the many long-term projects and

to separate them from the mundane tasks of paying the rent, cleaning the Museum, and so forth. This will also permit donors to select one or more of these special projects as the objects of their generosity. Here is an update since our last issue:

Scan the Past! (digitize the magazines). With the magazines carefully protected in their clear sleeves, it isn't likely that more than a very few Museum visitors and researchers will be permitted to thumb through the actual magazines. Most of the oldest issues are getting so fragile. Still, the information and historical perspectives in those many decades-old magazines must be preserved and made available to hobbyists. Three Museum members, Elmore Craig, Ron Norman, and Roger Yu, have been working on scanning the hundreds of magazines in the Museum, but this can't be done by just these three members. If you have the equipment and time, please contact the Museum. As each magazine is scanned, the data will be downloaded to a CD-ROM for archiving and then made available to members through the Museum's Web site.

Organize the hundreds of photos into photo albums. Another major project is the categorization and archiving of the many hundreds of photographs that we have collected over the last decade. A couple of years ago, Randy Vandraiss and Rex Barden roughly organized the enormous hobby photo collection, but did not have time to slip the photos (prints and slides) into clear protectors, and then place those, in turn, into binders. We need a club to take on this project. Ideally, the club should have members who would recognize individual modelers from the Midwest—we have many mid-'70s photos from the middle part of the United States that need to

be identified by name and event. Hopefully, one of our supporting clubs in Ohio or Wisconsin could take on this project.

Clone the Past/Restoration of Historic Models/Completion of Models. Your help is much needed so that we can present, in a special display cabinet, the history of the model car hobby seen through its leading models. Where we aren't able to acquire or borrow the models on our list (and only very few of the listed models still exist), we have decided to reproduce the most influential models in the history of our hobby. A recent cloning project is pictured in the accompanying photo: Bill Taylor has just finished his magnificent clone of the *Car Model Magazine* "Dixie Bee." Visit www.themodelcarmuseum.org, then click on "Projects," "Clone," and "Dixie Bee" for a full article on Bill's efforts.

Other Museum members are working on additional cloning projects. Please be aware that Museum member Gordon Clark (156 Spring Street, Yankton, SD 57058, 605 665-0442) has offered to search his magnificent personal parts collection to assist anyone cloning a model for the Museum. Just describe the specific parts and he'll try to "fill your order." Gordon's service is available *only* to those who are restoring a Museum model or building one of the *Clone the Past* projects. Thanks, Gordon!



The Dixie Bee.

Clone the Past documents are available at the Museum Web site: www.themodelcarmuseum.org, then click on "Projects" and "Clone."

We'll soon have a specially built display cabinet for the Museum dedicated to the *Hot 150/Clone the Past* program. Visitors will be able to view the progress of model building by examining the many models that will be displayed in this cabinet. Please think about getting on board and cloning one of the significant models on our list!

Museum supporters could also finish a Bob Barnett custom, or restore Jim Keeler's *Turbine Tub*, or take on one of the many other worthy projects in the Museum. In the past, GSL Best of Show winner Fred Grumke has completed the Zupan Mercury custom replica started by Bob Barnett in the early '90s. Visit www.themodelcarmuseum.org, then click on "Models," "Barnett," and "Zupan Merc" for a great article on this model, which is now in the Oakland Roadster Show Diorama.

Computer indexing of the Museum collection. Sometime in the future, once we have been able to make a list of everything in the collection, we need several modelers to do the data entry to create a retrievable/searchable list that can be accessed on the on-site computer or at the Museum's Web site. Again, we need volunteers with the time and access to a Windows-based computer.

Museum Store

MUSEUM STAFF

One of the best ways to help out the Museum is to purchase something from the Museum store. By purchasing any of these items, your

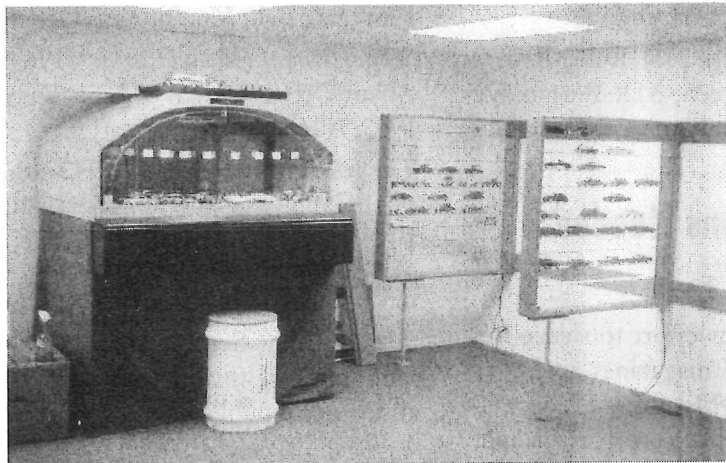
donations go directly into the Museum account!

The GSL International Model Car Championship, A Tradition of Auto Modeling Excellence. Written by Mark S. Gustavson, this book chronicles the first 16 years of the GSL Championship. The book is 196 pages in length, contains a full color center of the Best of Show winners, and reveals many previously unknown stories about the history of our hobby from 1979 through 1997. Each book is numbered, signed, and can be purchased for US\$30, postpaid. Make out a check to "Championship Publishing, LLC" and send it to the Museum. Net proceeds are divided between the Museum and GSL. Please allow three weeks for delivery. If you are ordering from outside the United States, please add US\$5 for the extra packaging and postage.

Custom Car Modeling. Written by Mark S. Gustavson, this book is available from Kalmbach Publishing (PO Box 1612, Waukesha, WI 53187, order desk 800 533-6644). The price is \$17.95 plus shipping. Or you can order an autographed copy of the book directly from the Museum for \$25, postpaid. The Museum has 12 copies for sale and they will be sold on a first-come, first-sold basis. All proceeds go to the Museum!

Museum T-Shirts are available. These beautiful silk-screened (Museum logo in blue on the front), buff-colored T-shirts are available for purchase. Each shirt is \$18, which includes Priority Mail shipping. We have these sizes available for immediate shipment: XXL (1); XL (8) and L (11). Of course, other sizes (except XXXL) can be supplied, but there would be about a three-week delay in receipt. As with other items from the Museum, all

proceeds go directly into the Museum's bank account!



Here, we have started to place some of the models in two of the display cabinets. The horizontal oak strips (on the right) provide secure mounting points for the cabinets. Right in front of the Oakland Roadster Show Diorama is the Museum Time Capsule that will be opened in 2015 at GSL-XXV.

GSL-XVII T-Shirts are available. We have a few leftover GSL-XVII T-Shirts available. "GSL-XVII" is printed on the left front of the shirt, and the GSL-XVII logo designed by Bob Wick is printed extra large on the back. The shirts are a deep burgundy color with the logos in silver. We have a very limited supply of these shirts, at "close out" pricing: XL (9) and L (4). Each shirt is \$16, which includes Priority Mail shipment. Make out your check or money order to the "National Model Car Builders' Museum."

Custom Car/Custom Hot Rod Research Bibliography is available. This research bibliography focuses on custom cars and hot rods with custom body work. The list provides research information on general, generic customizing techniques. There is a lot of information here: there are 2001 lines, 15,034 words and it runs 39 pages! This list is available for a \$10 donation, post paid. The list is updated approximately every two weeks. All net pro-

ceeds are donated to the Museum. Make out your check or money order to "The National Model Car Builders' Museum."

For all items, please send your check or money order to:
National Model Car Builders'
Museum
PMB #131
10271 South 1300 East
Sandy, Utah 84094

Ed Roth Paints Needed

MUSEUM STAFF

Model car historian and Museum member Bob Bergedick provided this corrected list of all Ed Roth paints once offered by Testor. The Museum needs all of these paints for its collection.

♦ Candies: 1R Outlaw Green; 5R Beatnik Bandit Red; 6R Mysterion Yellow; 7R Road Agent Red; 15R Orbitron Blue; 17R Tweedy Pie Purple; 18R White Pearl

- ♦ Solids: 19R Primer; 20R Gold Underbase; 21R Silver Underbase; 25R Surfite Yellow; 26R White; 28R Competition Orange
- ♦ Metalflakes: 29R Ruby Red; 30R Jade Green; 31R Burgundy; 39R Sapphire Blue; 42R Lime Gold

Publications Needed

MUSEUM STAFF

As part of our effort to sleeve the thousands of magazines that we have in the Museum, we have personally examined every magazine. Consequently, we need to acquire very good copies of the following magazines either to replace poor or missing copies. Please look through your collection and see if you can donate any one of the following magazines. Next issue, we'll publish a list of spare magazines from the Museum's collection (we discovered that we had many duplicates, too!).

Car Model. 1967: July, Sept; 1968: March, April, May, Sept, Nov; 1969: July, Aug, Sept, Oct, Nov; 1970: Feb, March, June, Sept, Oct, Nov; 1972: March, June through Dec; 1973: March (Volume 11, #8), May through Aug; 1974: Aug through end of publication

Cartoons. All but: Feb '65, March '73

IAAM Bulletin. 1955: Feb; 1956: March–April; 1958: Sept–Oct, Nov–Dec; 1960: March–April, July–Aug, Sept–Oct, Nov–Dec; 1961: Jan–Feb, March–April, May–June, Sept–Oct; 1963: March–April, May–June, Sept–Oct, Nov–Dec

International Modeler. 1973: all; 1974: Jan through March, Aug, Sept, Dec; 1975: Oct

Meccano Magazine. 1968: all but April

Miniature Truck News. Volume 3, #4 to end of publication

Model Car Science. 1963: April; 1964: May; 1965: Sept; 1966: Jan, Feb, May, July, Sept; 1967: Sept; 1968: Jan, Feb, March, Aug, Oct

Model Maker (Model Cars). 1963: all but Oct; 1964: Jan to June, Dec; 1965: All to end of publication

The Model Craftsman. 1932–38: all; 1939: all but May; 1940–43: all; 1944: all but Nov; 1945: Jan, Feb, March, Aug–Dec; 1946: January, Feb, March, Aug–Dec; 1947: Jan through May, Sept to Dec; 1948: Jan, Feb, Aug through Dec; 1949: all to end of publication

In Memoriam

GSL STAFF

As you may know, the GSL International Model Car Championship and the National Model Car Builders' Museum pays homage to those modelers who have passed on by reading their names at a presentation during the GSL awards banquet. The list was read during the GSL Reunion (1997) and during the seventeenth GSL Championship. It will be read again during the eighteenth GSL Championship next April.

Here is the list that we've compiled so far:

In Memoriam:

Herb Jackson (1986)
 Mike Pope (1989)
 Hal Taylor (1990)
 Cassie Vandraiss (1990)
 George Grant (1992)
 Steve Unger (1992)
 Steve Yoder (1992)
 Mike Watgen, (1993)
 Al Watson (1993)
 Budd (The Kat) Anderson (1994)
 Bob Barnett (1994)
 Mike Stunzi (1994)
 Carlo Brianza (1995)
 Steve Layten (1995)

Tom Showers (1995)
 Walter Glardon (1995)
 Steven Jewett (1995)
 Charles Nance (1995)
 Ron Roebuck (1995)
 Ed Soltis (1995)
 Rick Reichert (1995)
 Manuel Olive Sans (1995)
 Wolf Pechotsch (1995)
 Michael Conte (1996)
 Don Hillyer (1996)
 Dick Bassett (1996)
 John Reid (1996)
 Joe Cavorley (1996)
 Tom Augustyn (1997)
 Joy Townsend (1997)
 John Slivoski (1997)
 Jose Rodriguez (1997)
 John Hanley (1998)
 Dale Kartchner (1998)
 Dave Niemann (2000)

With the Eighteenth GSL Championship approaching (April 26–29, 2001), we want to update the list by adding to it the names of any modelers who are no longer with us. If you know of a modeler who has passed on, please notify GSL Headquarters by sending a note to Mark S. Gustavson at msgsl@xmission.com or by calling Mark in Utah during office hours at 801 523-3683. Include the person's name, city and state, and year of passing. Please call as soon as you can; this list must be up-to-date no later than April 20, 2001 for use during the GSL Championship.

Please make sure, of course, that your information is *absolutely correct* and that the next of kin consents to our listing. The names of all these modelers will be read at the upcoming GSL Championship and will be archived in the National Model Car Builders' Museum. These names will also appear on the GSL and Museum Web sites: www.gslchampionship.org and www.themodelcar-museum.org.

Adopt the Museum for a Month!

MUSEUM STAFF

People and organizations often contribute more than just the \$15 annual membership fee. The Museum uses a portion of these generous donations to pay the rent, and acknowledges the individuals and organizations by sending a certificate of appreciation. The giving levels are as follows:

Supporter. \$65–149.

Friend. \$150–249.

Adopter. \$250–499.

Benefactor. \$500 or more.

The “Adopter” level was instituted years ago to acknowledge donations of one month’s rent. Because the rent is now \$500 per month, we added the Benefactor level to recognize this extremely generous donation.

Here are those groups and individuals who contributed rent for 2000. The Museum expresses its profound appreciation to all those individuals and associations who contribute funds to pay the rent.

January. Mark S. Gustavson

February. Tri-State Scale Model Car Club

March. Joan and John Mahaffey

April. Tri-State Scale Model Car Club

May. Dr. C. E. Anagnostopoulos

June. All Museum members who renewed for 2000

July. Alan Raab

August. Alan Breslow (www.madmansmodels.com); Automotive Model Builders of Vancouver; Pryor Passarino; Puget Sound Auto Modelers Association

September. Howard Brown; Calvin and Nancy Crouch; Little Mo-

tor Kar Company (Dale Horner); Ron Norman; Bob Shelton; Don Sikora; John White

October. Don Banes; Fred Drummond; Robert Kremer; Greg Plummer; Scale Motorsports; John Sharisky

November. Tri-State Scale Model Car Club

December. Tri-State Scale Model Car Club

Foreign Correspondents

The Museum is enlisting the aid of modelers outside the United States to act as our “foreign correspondents.” We hope these modelers will contribute articles about the state of the car model hobby in their countries. If you are interested in taking on this role for your country, please contact us.

JUHA AIRIO. Finland

ANDERS ERICSON. Sweden

MARK FLYS. Great Britain

RIK HOVING. The Netherlands

K. S. RAMAN. India

FRANCISCO RUPP. Brasil

JOAN OLIVE SANS. Spain

ZELJKO SEGIN. Croatia

How to Contact Us

If you need to send mail to the Museum that requires a signature or other personal handling by the staff, please send it directly to Mark S. Gustavson rather than to the Museum’s mailing address.

Mark S. Gustavson
1348 Longdale Drive
Sandy, UT 84092

If you have a large box of materials for the Museum, please contact Mark S. Gustavson or Mark Benton

to arrange for delivery. Their work numbers are 801 523-3683 and 801 534-1231, respectively.

Submissions to *The Builder* and questions about receiving it in the mail or via the Internet can be addressed to the Editor: Paul Anagnostopoulos, 978 371-2316, paul@windfall.com

The Builder Vol. 6, No. 3

The Builder is a publication of the National Model Car Builders’ Museum. Please visit our web site: www.themodelcarmuseum.org

Publisher: Mark S. Gustavson,
msgsl@xmission.com

Editor: Paul Anagnostopoulos,
paul@windfall.com

Webmaster: Mark Benton,
mjbenton@xmission.com

Museum Trustees: Paul Anagnostopoulos, Mike Barlow, Mark Benton, Pat Covert, Brian Dees, Mark S. Gustavson, Bill Helm, Alan Raab, Randy Vandraiss

Research Assistants: Rex Barden, Russ Harding, Randy Vandraiss

Museum logo designed by Russ Schwenkler

National Model Car Builders’ Museum
10271 South 1300 East
PMB #131
Sandy, UT 84094

Happy Holidays

and

Best Wishes for a wonderful 2001

Thank you for your invaluable support!